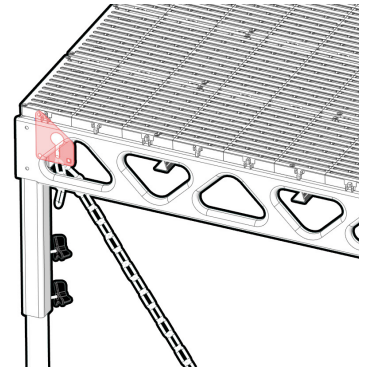
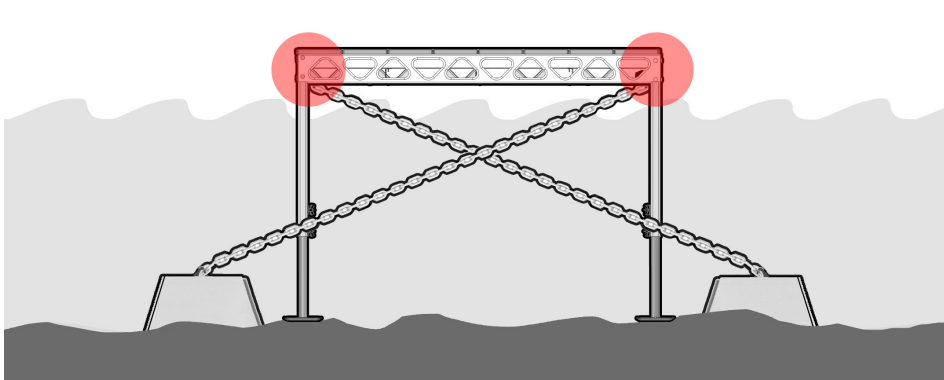
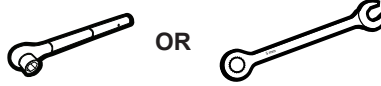


INCLUDED IN KIT:

CR1  X1 NL38  X3 CB15S  X1



TOOLS REQUIRED:

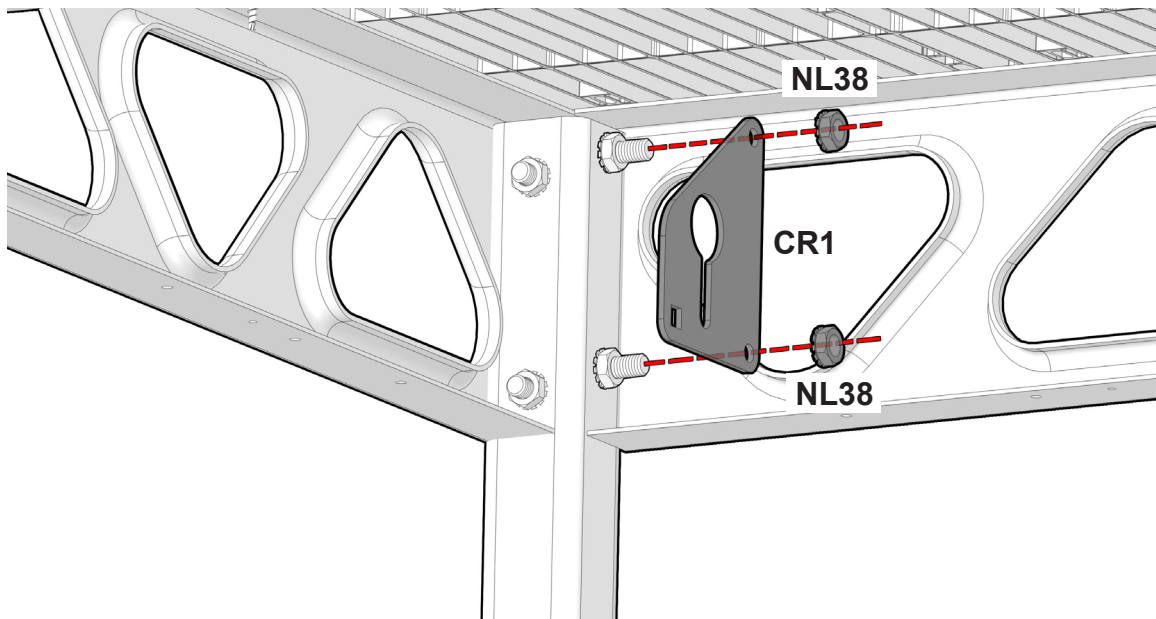
- 9/16" socket with ratchet to suit
or
9/16" Box Wrench



Chain retainers are used to connect anchor chains to a standing dock. See the images above to see locations for placement. Please view anchoring instructions for any further information on anchor installation and placement.

1

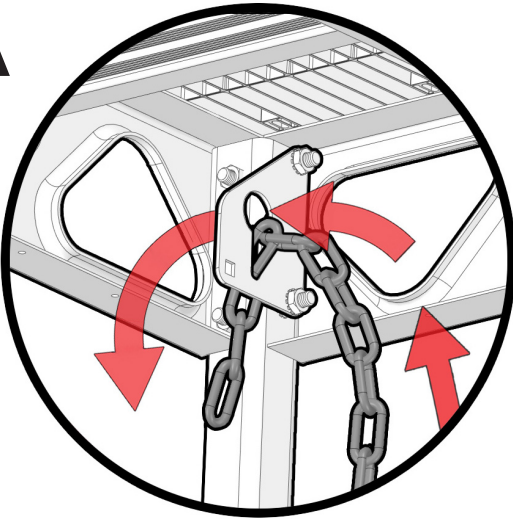
CR1  X1
NL38  X2



Place chain retainer(CR1) plate over top of existing bolts on corner legs. Fasten with nuts (NL38).
Follow Step 1 for any other chain retainers to be added to your dock system.

2 Connecting a chain to the chain retainer.

A



CB15S



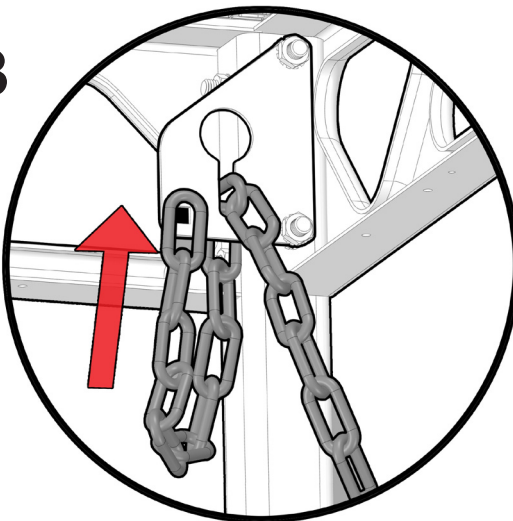
X1

NL38

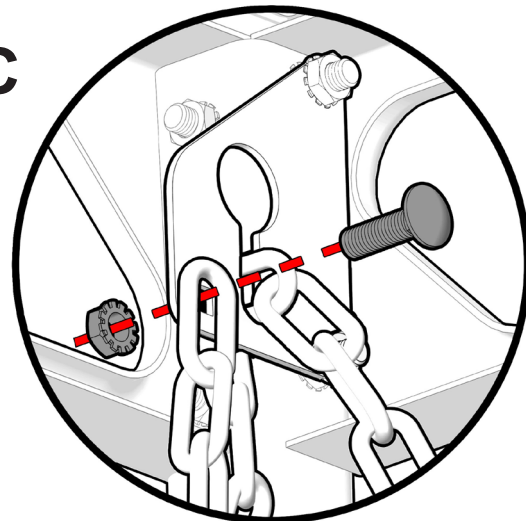


X1

B

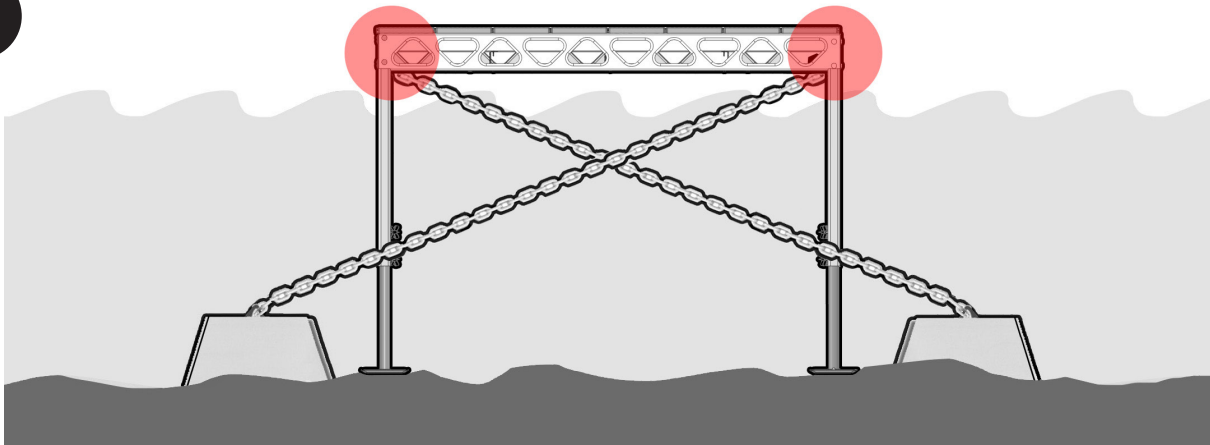


C



Feed the chain through the chain retainer keeping the chain link tight.

3



Follow Step 1-2 for any other chain retainers to be added to your dock system.