

## INCLUDED IN KIT:

(A) L-Bracket x1



(B) Joining Bracket x1



(C) Hanger Bracket x1



(D) Locking Key x1



(E) Hitch Pin x2



(F) Triangle Backing Plate x1



(G) 3/8x1½ Carriage Bolt x3



(H) 3/8" Hex Nut x4  
(Hot Dipped Galvanized)



(I) 3/8" LockWasher x4



## Tools Required

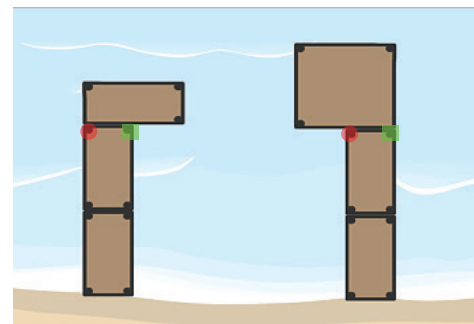


or



- 9/16" socket with ratchet to suit or 9/16" Box end Wrench

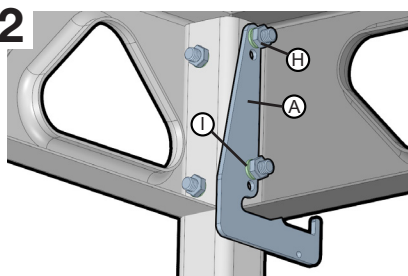
1



You will be attaching a three legged dock in an L-shaped fashion for this install. Brackets are added to the supporting docks for added extensions.

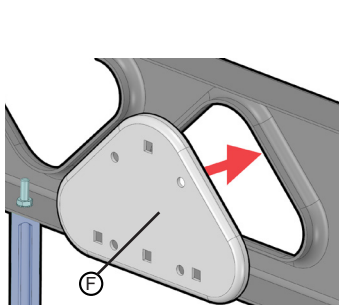
● L and Joining Bracket    ■ Dock Leg  
■ Hanger Bracket

2



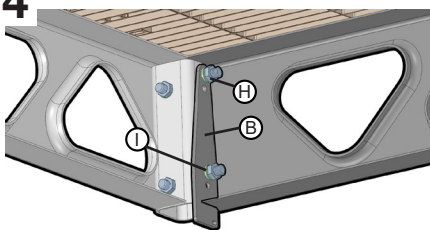
Fasten the "L" shaped bracket (A) with existing 3/8" LockWashers (I) and Hex Nuts (H) of the supporting dock. (additional nuts used)

3



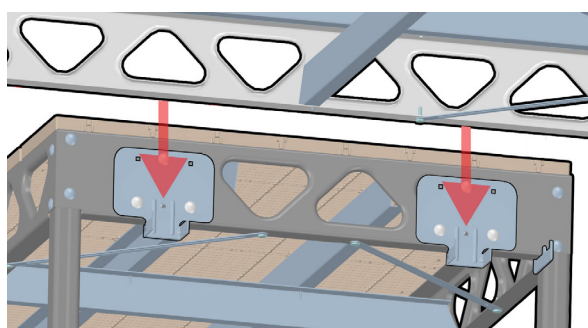
Take triangle Backing Plate (F) and place on the inside of the last triangle cut out of the 4' truss. Connect Hanger Bracket (C) to Backing Plate (F) using 3/8" Carriage Bolts (G), Hex Nuts (H) and LockWashers (I).  
**PLEASE NOTE:** The above image has hidden some deck elements such as decking to better illustrate the Hanger Bracket assembly. The image may also show a slightly different setup than your configuration.

4



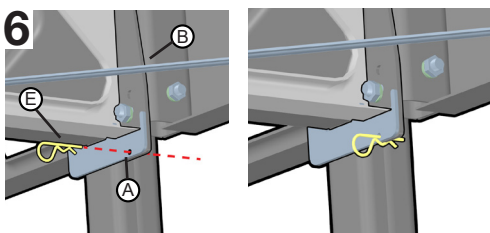
Fasten Joining Bracket (B) to the dock with three (3) legs on the corner without a leg. Use existing 3/8" k-locknuts (H) to secure bracket. (no additional nuts used).

5



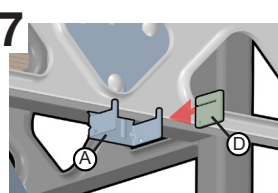
Ensure all fasteners are tightened with ratchet. Place dock with three legs onto L & Hanger brackets.  
**Please Note:** Picture may be slightly different than your configuration.

6



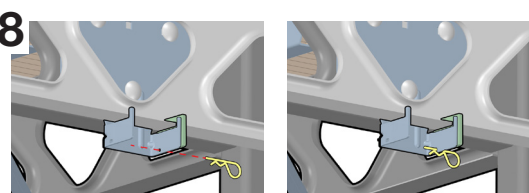
Align holes of the L - bracket (A) to Joining bracket (B) and insert pin (E).

7



Slide Locking Key (D) onto the truss edge next to the Hanger Bracket (A).

8



Take locking key (D) align with hole on hanger bracket (C) and insert pin (E).